



**SEKOLAH MENENGAH KEJURUAN TEKNOLOGI INFORMASI
(SMK TI) PELITA NUSANTARA KEDIRI**

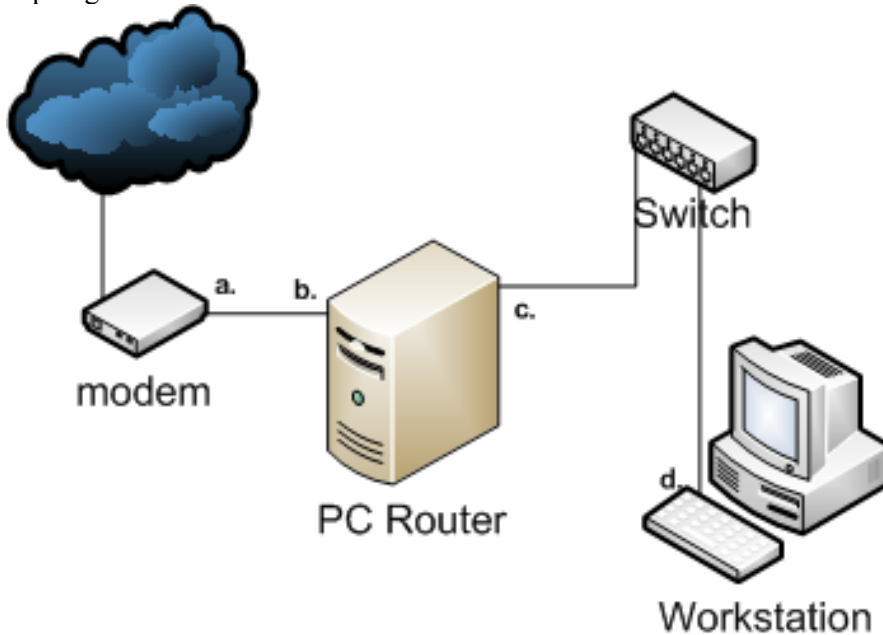
NIS/NSS : 400021/104205630204 - NPSN : 20540341

Kompetensi Keahlian : - Multimedia (akreditasi B) - Teknik Komputer & Jaringan (akreditasi B)
- Rekayasa Perangkat Lunak

Jl. Balowerti II 25 Telp. 0354-690571, Fax. 680162 KEDIRI - Surel : smktpn@yahoo.co.id

Kisi - kisi Ujian Praktek KWAN

Topologi



Konfigurasi IP

- a.
- b.
- c.
- d.

Langkah – langkah kerja

- a. Perhatikan keselamatan kerja pada lembar ujian praktek
- b. Konfigurasi ip perangkat modem, server, dan workstation
- c. Konfigurasi ip dirubah sesuai yang ditentukan pengawas
- d. Konfigurasi ip modem

Contoh ini menggunakan modem merk billion

Interface Setup >> LAN

BILLION ADSL Modem/Router

Interface | Quick Start | **Interface Setup** | Advanced Setup | Access Management | Maintenance | Status | Help

Internet | **LAN**

Router Local IP

IP Address : 192.168.3.1
IP Subnet Mask : 255.255.255.252
Dynamic Route : RIP1 | Direction : None
Multicast : Disabled
IGMP Snoop : Disabled Enabled

DHCP

DHCP : Disabled Enabled Relay

SAVE CANCEL

- e. Konfigurasi ip PC Router
- Langkah langkah :
Login sebagai user



**SEKOLAH MENENGAH KEJURUAN TEKNOLOGI INFORMASI
(SMK TI) PELITA NUSANTARA KEDIRI**

NIS/NSS : 400021/104205630204 - NPSN : 20540341

**Kompetensi Keahlian : - Multimedia (akreditasi B) - Teknik Komputer & Jaringan (akreditasi B)
- Rekayasa Perangkat Lunak**

Jl. Balowerti II 25 Telp. 0354-690571, Fax. 680162 KEDIRI - Surel : smktpn@yahoo.co.id

```
Ubuntu 12.04.1 LTS ubuntu tty1
ubuntu login: instruktur
Password:
Last login: Mon Dec  2 14:50:45 WIT 2013 on tty1
Welcome to Ubuntu 12.04.1 LTS (GNU/Linux 3.2.0-29-generic-pae i686)

* Documentation:  https://help.ubuntu.com/

System information disabled due to load higher than 1.0

4 packages can be updated.
0 updates are security updates.

The programs included with the Ubuntu system are free software;
the exact distribution terms for each program are described in the
individual files in /usr/share/doc/*/copyright.

Ubuntu comes with ABSOLUTELY NO WARRANTY, to the extent permitted by
applicable law.

instruktur@ubuntu:~$
```

Login sebagai super user

```
instruktur@ubuntu:~$ sudo -s
[sudo] password for instruktur:
root@ubuntu:~# _
```

Interface eth0

nano /etc/network/interfaces

```
root@ubuntu:~# nano /etc/network/interfaces _
```

Konfigurasi interfaces eth0

```
GNU nano 2.2.6      File: /etc/network/interfaces      Modified

# This file describes the network interfaces available on your system
# and how to activate them. For more information, see interfaces(5).

# The loopback network interface
auto lo
iface lo inet loopback

# The primary network interface
auto eth0
iface eth0 inet static
    address 192.168.1.2
    network 192.168.1.0
    netmask 255.255.255.0
    broadcast 192.168.1.255
    gateway 192.168.1.1_
```

Konfigurasi interfaces eth1



**SEKOLAH MENENGAH KEJURUAN TEKNOLOGI INFORMASI
(SMK TI) PELITA NUSANTARA KEDIRI**

NIS/NSS : 400021/104205630204 - NPSN : 20540341

**Kompetensi Keahlian : - Multimedia (akreditasi B) - Teknik Komputer & Jaringan (akreditasi B)
- Rekayasa Perangkat Lunak**

Jl. Balowerti II 25 Telp. 0354-690571, Fax. 680162 KEDIRI - Surel : smktpn@yahoo.co.id

```
GNU nano 2.2.6      File: /etc/network/interfaces      Modified

# This file describes the network interfaces available on your system
# and how to activate them. For more information, see interfaces(5).

# The loopback network interface
auto lo
iface lo inet loopback

# The primary network interface
auto eth1
iface eth1 inet static
    address 192.168.2.1
    network 192.168.2.0
    netmask 255.255.255.0
    broadcast 192.168.2_255
```

Simpan dengan perintah ctrl+O

Keluar dengan perintah ctrl+X

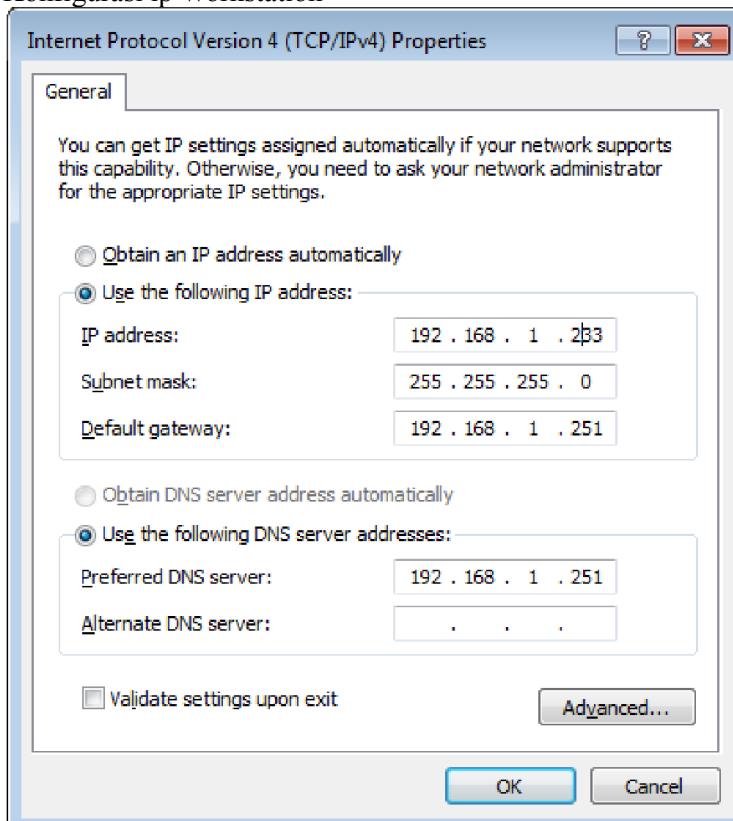
Restart networking

```
root@ubuntu:~# /etc/init.d/networking restart
* Running /etc/init.d/networking restart is deprecated because it may not enable
e again some interfaces
* Reconfiguring network interfaces...
ssh stop/waiting
ssh start/running, process 1729

[ OK ]

root@ubuntu:~#
```

f. Konfigurasi ip Workstation



g. Tes Koneksi

Workstation ke Router

Workstation ke modem